



# YJZQ /CJZQ Series High Pressure Ball Valve

## YJZQ Series High Pressure Ball Valve

### 1 Introduction

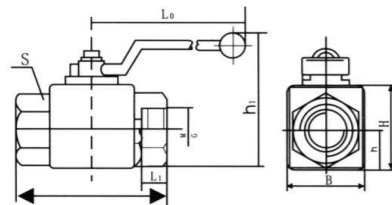
YJZQ ball valve is used to control and stop the oil in the hydraulic system. Our ball has the characteristics of small loss of flow resistance, reliable sealing performance, easy operation and good appearance. The body of the ball valve is made of steel forging and the surface is chrome plated. We also provide stainless steel ball valves.

### 2 Model Code

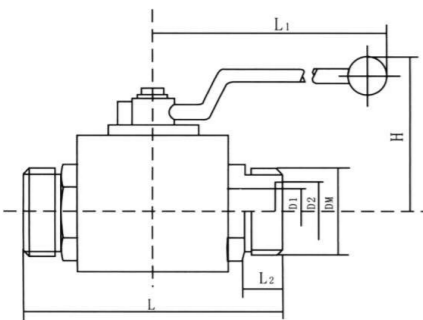
$\frac{Y}{(1)} \frac{JZQ}{(2)} - \frac{\square}{(3)} \frac{\square}{(4)} \frac{\square}{(5)}$

- (1) Suitable for Y Hydraulic System
- (2) Series Code: JZQ Ball Stop Valve
- (3) Nominal Pressure: J—31.5MPa  
H—21MPa
- (4) Nominal Size: 10~50mm
- (5) Connection Female Thread Connection  
Male Thread Connection  
Plate Connection

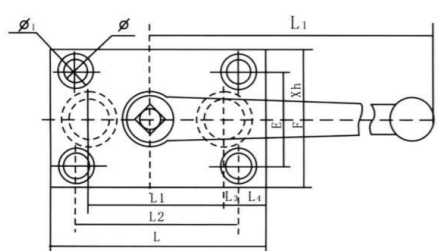
### 3 Overall Dimension



Model	M	G	Size (mm)							
			B	H	h	h1	L	L1	S	L0
YJZQ-J10N	M18×1.5	3/8"	34	37	17	72	78	14	30	127
YJZQ-J15N	M22×1.5	1/2"	35	40	17.5	74	86	16	30	127
YJZQ-J20N	M27×2	3/4"	48	55	24	96	108	18	42	184
YJZQ-J25N	M33×2	1"	58	61	30.5	116	116	20	48	184
YJZQ-J32N	M42×2	1-1/4"	68	72	34	141	136	22	60	215
YJZQ-J40N	M48×2	1-1/2"	80	90	42	165	148	24	70	215
YJZQ-J50N	M64×2	2"	98	110	50	180	180	26	80	229



Model	DM	Size (mm)					
		D1	D2	L	L1	L2	H
YJZQ-J10W	M27×1.5	10	20	90	127	16	58
YJZQ-J15W	M30×1.5	15	22	95	127	18	68
YJZQ-J20W	M36×2	20	30	112	184	18	72
YJZQ-J25W	M42×2	24	35	122	184	20	86
YJZQ-J32W	M52×2	30	40	145	215	22	103
YJZQ-J40W	M64×2	38	50	156	215	24	120
YJZQ-J50W	M72×2	48	60	189	229	26	128



Model	Size (mm)										
	h	L0	E	F	L	L1	L2	L3	L4	f	D
YJZQ-J10B	40	127	38	54	80	45	56	11	12	f 7	10
YJZQ-J15B	46	127	42	60	91	52	60	6	19	f 9	15
YJZQ-J20B	50	184	50	70	108	60	70	7.5	21.5	f 11	20
YJZQ-J25B	60	184	55	77	114	65	80	11	17.5	f 11	25
YJZQ-J32B	76	215	75	100	154	90	120	19	18	f 13	32
YJZQ-J40B	95	215	90	122	185	110	150	23	20	f 17	40



## CJZQ Series Ball Stop Valve(QJZ Series)

### 1 Introduction

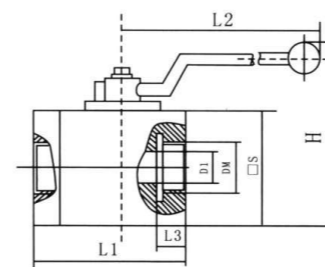
CJZQ ball valve is used to control and stop the oil in the hydraulic system. Our ball has the characteristics of small loss of flow resistance, reliable sealing performance, easy operation and good appearance. The high pressure hydraulic ball valves consist of valve bodies, balls, stems, handles and sealing devices. The body of the ball valve is made of steel forging and the surface is chrome plated. We also provide ball valves covered by stainless steel. Our high pressure hydraulic ball valves have three main connection ways: male thread type, female thread type and flange type.

### 2 Model Code

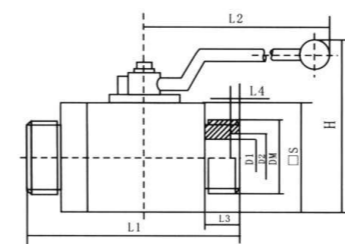
$\frac{C}{(1)} \frac{JZQ}{(2)} - \frac{\square}{(3)} \frac{\times}{(4)} \frac{H}{(5)}$

- (1) Mainly used in ships
- (2) Series Code: JZQ Ball Stop Valve
- (3) Connection Way: F-flange connection  
L-thread connection  
G-female thread connection
- (4) Nominal Size: 6-80mm
- (5) Nominal Pressure: H-31.5MPa  
F-21MPa

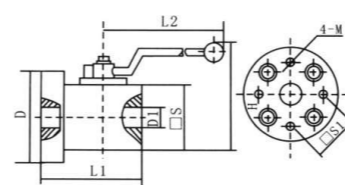
### 3 Overall Dimension



Model	D1/DN (mm)	Size (mm)						
		L1	L2	L3	H	D1	□S	DM
CJZQ-G6H	6	68	100	12	80	6	44	M14×1.5
CJZQ-G8H	8	70	100	14	80	8	44	M16×1.5
CJZQ-G10H	10	88	127	14	85	10	52	M18×1.5
CJZQ-G15H	15	91	127	16	89	15	56	M27×2
CJZQ-G20H	20	100	184	18	109	20	65	M33×2
CJZQ-G25H	25	111	184	20	114	24	70	M42×2
CJZQ-G32H	32	131	215	22	129	30	81	M48×2



Model	D1/DN (mm)	Size (mm)							
		L1	L2	L3	L4	H	D2	□S	DM
CJZQ-L6H	6	72	100	12	1.5	80	11	34	M16×1.5
CJZQ-L8H	8	86	100	14	1.5	80	16	44	M22×1.5
CJZQ-L10H	10	100	127	15	1.8	90	20	52	M27×1.5
CJZQ-L15H	15	105	127	16	1.8	94	24	56	M30×1.5
CJZQ-L20H	20	121	184	18	2.4	115	30	65	M36×2
CJZQ-L25H	25	135	184	20	2.4	122	35	68	M42×2
CJZQ-L32H	32	160	215	22	2.4	145	40	85	M52×2
CJZQ-L40H	40	180	215	30	2.4	150	45	90	M60×2
CJZQ-L50H	50	205	229	35	2.4	190	55	120	M72×2



Model	D1/DN (mm)	Size (mm)							
		L1	L2	L3	L4	H	D2	□S	DM
CJZQ-F10H	10	88	127	90	10	52	28.3	M8	73
CJZQ-F15H	15	91	127	94	15	56	35.4	M8	78
CJZQ-F20H	20	97	184	115	20	65	43.8	M10	88
CJZQ-F25H	25	111	184	122	24	70	51.6	M12	98
CJZQ-F32H	32	131	215	145	30	84	60.1	M14	128
CJZQ-F40H	40	141	215	150	38	96	69.3	M16	130
CJZQ-F50F	50	170	229	190	48	120	83.4	M20	156
CJZQ-F65F	65	185	290	190	60	135	102.5	M22	178
CJZQ-F80F	80	225	290	220	70	160	113.1	M24	218

