



KHB KHM Series SAE Flange Hydraulic Ball Valve(International Standard)

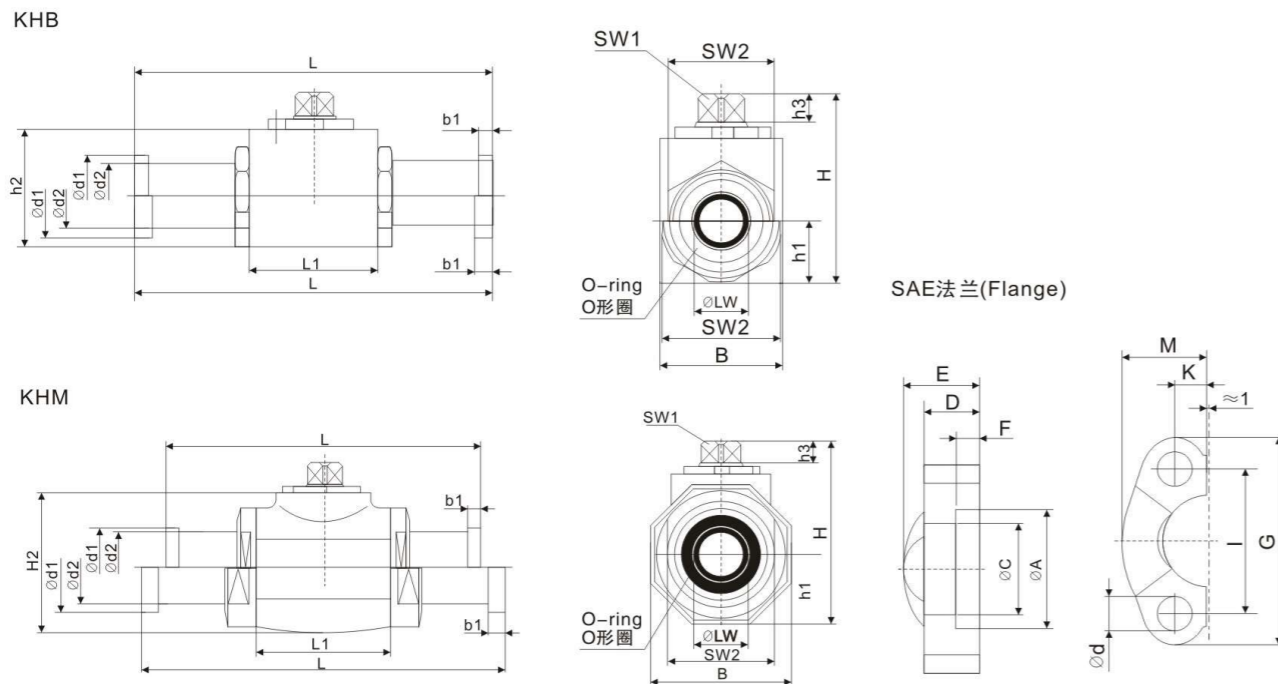
1 Model Code

KHB **20** - **F3** - **1** **1** **1** **2** **1** - **02**
 (1) (2) (3) (4) (5) (6) (7) (8) (9)

- Series Code : KHB-Squared type.DN16--25
KHM-Round type.DN32-50
- Nominal Size:16~50mm.
- Flange Code :F3--SAEJ518C3000psi(21MPa)
F6--SAEJ518C3000psi(42MPa)
- Valve Body Material:1-carbon steel, 2-stainless steel
- Ball Body Material:1-alloy steel, 3-stainless steel
- Ball Sealing Material:1-POM
- Other Sealing Material:2-NBR,4-FPM/FKM
- SAE C Flange Material: 1-steel



2 Overall Size



KHB KHM Series SAE Flange Hydraulic Ball Valve(International Standard)

KHB/KHM-F3

| Model | SAE | DN | LW | L | L1 | H | h1 | h2 | h3 | B |
|-----------|-------|----|----|-------|-----|-------|------|-------|----|-----|
| KHB-16-F3 | 3/4" | 16 | 15 | 170 | 47 | 63.5 | 19 | 46 | 11 | 38 |
| KHB-20-F3 | 3/4" | 20 | 19 | 170 | 60 | 75 | 24 | 57 | 12 | 48 |
| KHB-25-F3 | 1" | 25 | 25 | 176.5 | 65 | 82 | 28.5 | 64 | 12 | 57 |
| KHM-32-F3 | 1'14" | 32 | 30 | 191.4 | 84 | 104.5 | 37.5 | 84 | 14 | 75 |
| KHM-40-F3 | 1'12" | 40 | 38 | 231 | 91 | 115.5 | 42.5 | 95 | 14 | 85 |
| KHM-50-F3 | 2" | 50 | 48 | 234 | 100 | 133 | 52.5 | 112.5 | 14 | 105 |

| Model | b1 | d1 | d2 | SW1 | SW2 | O-ring(GB1235-76) |
|-----------|-----|-------|------|-----|-----|-------------------|
| KHB-16-F3 | 6.8 | 38.1 | 31.5 | 12 | 32 | 32x3.1 |
| KHB-20-F3 | 6.8 | 38.1 | 31.5 | 14 | 41 | 32x3.1 |
| KHB-25-F3 | 8 | 44.45 | 38 | 14 | 50 | 40x3.1 |
| KHM-32-F3 | 8 | 50.8 | 43 | 17 | 60 | 45x3.1 |
| KHM-40-F3 | 8 | 60.35 | 50 | 17 | 70 | 55x3.1 |
| KHM-50-F3 | 9.6 | 71.4 | 62 | 17 | 80 | 65x3.1 |

AE法兰-F3

| Model | A | C | D | E | F | M | K | I | G | d |
|-----------|------|------|----|----|-----|------|----|------|-----|------|
| KHB-16-F3 | 38.9 | 32.2 | 14 | 22 | 6.2 | 24.9 | 10 | 47.6 | 65 | 10.5 |
| KHB-20-F3 | 38.9 | 32.2 | 14 | 22 | 6.2 | 24.9 | 10 | 47.6 | 65 | 10.5 |
| KHB-25-F3 | 45.3 | 38.5 | 16 | 22 | 7.5 | 28.2 | 12 | 52.4 | 70 | 10.5 |
| KHM-32-F3 | 51.6 | 43.7 | 16 | 24 | 7.5 | 35.3 | 14 | 58.7 | 80 | 12 |
| KHM-40-F3 | 61.1 | 50.8 | 16 | 25 | 7.5 | 40.1 | 17 | 69.9 | 94 | 13.5 |
| KHM-50-F3 | 72.3 | 62.8 | 16 | 26 | 9 | 47.2 | 21 | 77.8 | 102 | 13.5 |

减少的公路途径

B/KH-F6

| Model | SAE | DN | Lw | L | L1 | h | h1 | h2 | h3 | B |
|-----------|--------|----|----|-------|-----|-------|------|-------|----|-----|
| KHB-16-F6 | 3/4" | 16 | 15 | 170 | 47 | 63.5 | 19 | 46 | 11 | 38 |
| KHB-20-F6 | 3/4" | 20 | 19 | 170 | 60 | 75 | 24 | 57 | 12 | 48 |
| KHB-25-F6 | 1" | 25 | 25 | 198.5 | 65 | 82 | 28.5 | 64 | 12 | 57 |
| KHM-32-F6 | 1'1/4" | 32 | 30 | 223.4 | 84 | 104.5 | 37.5 | 84 | 14 | 75 |
| KHM-40-F6 | 1'1/2" | 40 | 38 | 281 | 91 | 115.5 | 42.5 | 95 | 14 | 85 |
| KHM-50-F6 | 2" | 50 | 48 | 315 | 100 | 133 | 52.5 | 112.5 | 14 | 105 |

| Model | b1 | d1 | d2 | SW1 | SW2 | O-ring (GB1235-76) |
|-----------|------|------|----|-----|-----|--------------------|
| KHB-16-F6 | 8.8 | 41.3 | 32 | 12 | 32 | 32x3.1 |
| KHB-20-F6 | 8.8 | 41.3 | 32 | 14 | 41 | 32x3.1 |
| KHB-25-F6 | 9.5 | 47.6 | 38 | 14 | 50 | 40x3.1 |
| KHM-32-F6 | 10.3 | 54 | 44 | 17 | 60 | 45x3.1 |
| KHM-40-F6 | 12.6 | 63.5 | 51 | 17 | 70 | 55x3.1 |
| KHM-50-F6 | 12.6 | 79.4 | 67 | 17 | 80 | 65x3.1 |

AE法兰(Flange)-F3

| Model | A | c | D | E | F | M | K | I | G | d |
|-----------|------|------|----|----|-----|------|----|------|-----|------|
| KHB-16-F6 | 42 | 32.5 | 19 | 28 | 8.2 | 29 | 11 | 50.8 | 72 | 10.5 |
| KHB-20-F6 | 42 | 32.5 | 19 | 28 | 8.2 | 29 | 11 | 50.8 | 72 | 10.5 |
| KHB-25-F6 | 48.4 | 38.9 | 24 | 33 | 9 | 33.8 | 13 | 57.2 | 81 | 13 |
| KHM-32-F6 | 54.8 | 44.5 | 27 | 38 | 9.8 | 37.6 | 15 | 66.6 | 96 | 15 |
| KHM-40-F6 | 64.3 | 51.6 | 30 | 43 | 12 | 46.5 | 17 | 79.3 | 113 | 17 |
| KHM-50-F6 | 80.2 | 67.6 | 37 | 52 | 12 | 55.9 | 21 | 96.8 | 134 | 21 |